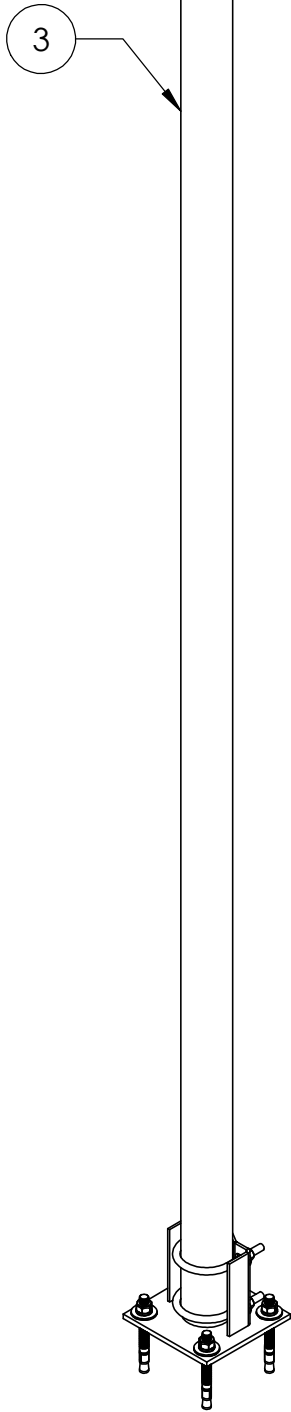
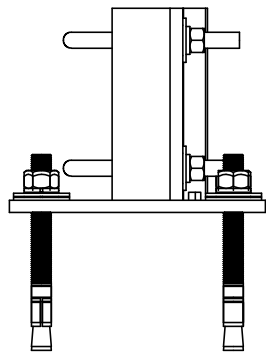
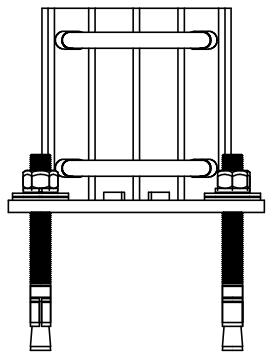
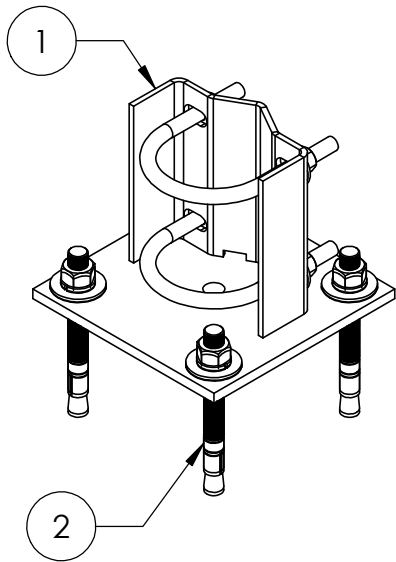
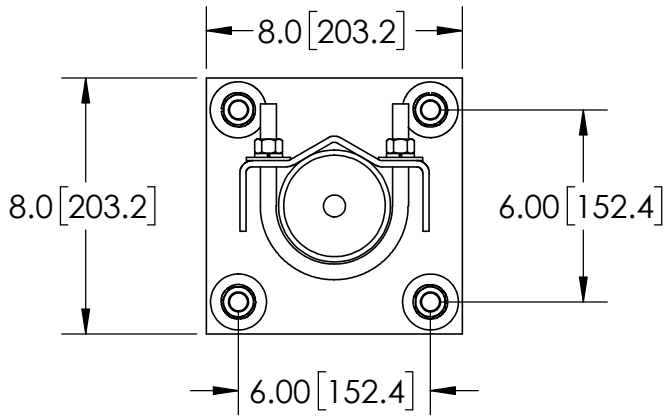



ITEM	PART NO.	DESCRIPTION	QTY.	WEIGHT
1	WBBS2	BASE SHOE FOR ϕ 3-1/2" O.D. PIPE	1	14.18 LBS
2	MT280	5/8" X 6" WEDGE ANCHOR KIT	4	0.64 LBS
3	MT547126	ϕ 3.5" O.D. X 10'6" (126") STRUCTURAL TUBE	1	61.93 LBS

REVISIONS				
REV.	ZONE	DESCRIPTION	BY	DATE
A		INITIAL RELEASE	ACG	03/10/05
B		UPDATE TO PLAIN PIPE & BASE SHOE ASSEMBLY	ACG	11/18/21
C		UPDATE VERSION OF WBBS & ADD MT280	ACG	05/20/22
D		REPLACE WBBS WITH WBBS2	ACG	07/23/24



- NOTES:
- ALL METRIC DIMENSIONS ARE IN BRACKETS.
 - STAMP PART IDENTIFICATION NUMBER.
 - WELDING WORKMANSHIP PER AWS D1.1.

These drawings and specifications are the proprietary property of WANHO Manufacturing, LLC and may be used only for the specific purpose authorized in writing by WANHO Manufacturing, LLC.			DRAWN BY: ACG	SHEET: 1 of 1	PART NUMBER: FM-MF126
ALL DIMENSIONS ARE IN INCHES U.O.S. TOLERANCES UNLESS OTHERWISE SPECIFIED: .X = \pm .06 .XX = \pm .03 .XXX = \pm .010 ANGLES \pm 2" FRACTIONS \pm 1/32 REMOVE BURRS AND BREAK EDGES .005			CHECKED BY: MKV	SCALE: NTS	DESCRIPTION: 3-1/2" OD X 10'6" PIPE & WBBS BASE SHOE
DATE: 11/18/21			REVISION: D	MATERIAL: ASTM A36 & A53	DRAWING TYPE: ASSEMBLY DRAWING
DO NOT SCALE THIS PRINT				FINISH: ASTM A123	
				WEIGHT: 78.67 LBS	